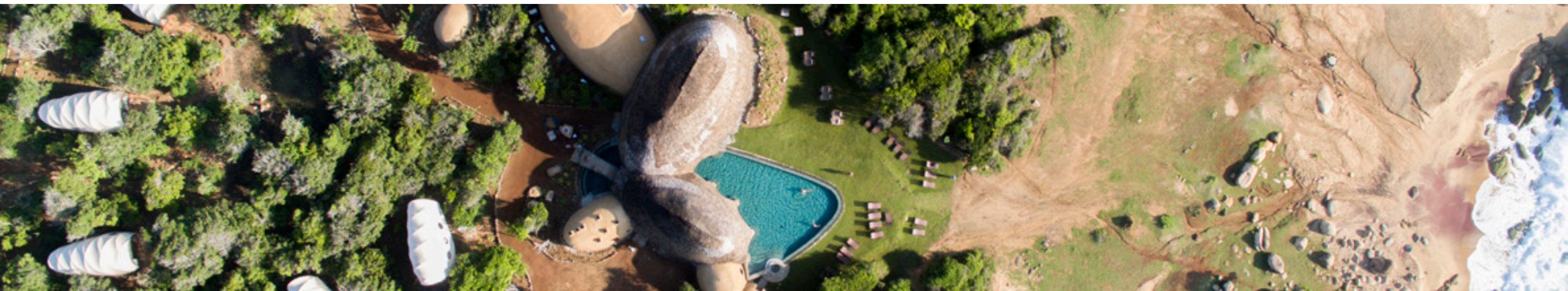




nomadic resorts



portfolio
November 2022





Introduction

ABOUT US

Nomadic Resorts is an interdisciplinary design company with offices in the Netherlands and Mauritius. Our services include Masterplanning, Architectural Design, Landscape Design and Interior Design.

Using a holistic approach, we create sustainable resort and residential projects that reflect a true sense of place and fit organically into their natural surroundings as we believe that designs should serve as a bridge to connect nature, culture and people.

Our team specializes in sustainable architecture, contemporary bamboo construction, treetop living concepts, tensile membrane design & engineering, regenerative landscape design, permaculture and low carbon engineering. We are closely linked with a network of specialists in various green building and sustainable design fields including waterscape ecologists, renewable energy technicians, treetop canopy walkway and treehouse specialists, bamboo builders, aquaponics experts, permaculture designers, tree surgeons, spa consultants and structural engineers which allows us to draw on wide ranging expertise to overcome technical obstacles.

We have worked on numerous luxury resorts, retreats and camps in far flung places, for amongst others Playa Viva, Resplendent Ceylon, Six Senses resorts and spas and Soneva Group, One&Only and Tri Lanka.

OUR VALUES

Organic

Nomadic Resorts derives its inspiration from the natural environment that surrounds us, we strive to create designs that celebrate biodiversity, compliment the natural features of the sites we build on, and respect the natural forms that surround us.

Innovative

We strive to change the way resorts, camps and lodges are designed, built and operated. We research, we experiment and we test new methods, materials and technologies to offer our clients optimized solutions using both state of the art technology and knowledge from local vernacular architecture.

Holistic

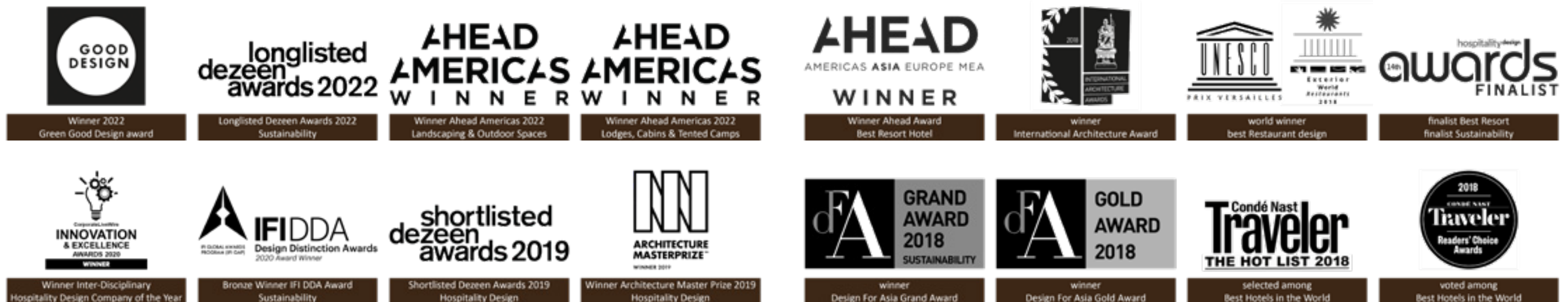
We follow a biophilic approach integrating both vernacular and innovative materials and products, resulting in holistic design solutions. Biophilic design seeks to connect our inherent need to affiliate with nature in the modern built environment.

Inclusive

We are thirsty to learn new methods and approaches and are happy to share our skills and knowledge with others. We create positive projects in collaboration with the communities we work in.

Respectful

We respect the input of our clients, their stakeholders and our fellow consultants. We listen to the opinions of all parties involved.





Curriculum Vitae



Louis Thompson
CEO & Landscape Designer
Nomadic Resorts

As a LEED AP, green building and landscape design professional specializing in the realization eco-resorts, tented camps and high end residential villa developments; Louis has 20 years' experience of designing, building and operating high-end, mixed use development projects across the globe.

Louis has a BTS diploma in Hotel Management and Marketing and studied Hotel Design and Planning at Cornell-Nanyang Institute of Hospitality Management in Singapore.

Hotel Design, development and Project Management Experience

2012- present	Founder and CEO of Nomadic Resorts
2010-2012	Project Manager of Six Senses Beyond Galle Zero Carbon eco-lodge.
2009-2011	Director of Green Building and sustainable landscaping at Six Senses
2009-2010	Project Manager and Construction supervisor for Treetop dining pod
2006-2009	Project Manager and Construction supervisor of Eco Villa at Soneva Kiri
2005-2006	Assistant Project Manager Fresh in the Garden organic restaurant at Soneva Fushi

Landscaping Experience

2013-14	Landscape Design for Karo Villas, Dickwella, Sri Lanka
2012-14	Landscape Design for Tri Luxury retreat at Koggala lake
2012-13	Landscape Design for Wild Buffalo Hill Planters House
2007-2011	Project manager and site supervisor for the landscaping of Soneva Kiri
2005-2008	Six Senses Permaculture designer
2004-2005	Native landscape regeneration Project Manager at Soneva Gili following the Indian Ocean Tsunami.

Operations Experience

2008-2012	Six Senses resorts and spas – Director of Green Building and Sustainable Landscaping: Working with the Development Team and Projects department at Six Senses head office in Bangkok to implement the Holistic Environmental Management Plan for the company worldwide.
2002-2004	Front Office Manager, Hotel Juliette Dodu, Reunion Island

Education & Credentials

2011-2014	Msc in Architecture Advanced environmental and energy studies
2011- 2012	Professional Diploma in Architecture: Advanced environmental and energy studies.
2008	LEED Accredited Professional Examination.
2008	Hotel Planning and Design and Hotel Design Consultation.
2005	Permaculture Design Certificate.
2001-2002	Institut de Promotion Commerciale Hôtelière (Bac +2).
1996- 2000	BA in French and European Studies (2:2).
1992-1994	3 A levels at Bordeaux International School, Bordeaux France(History, French and Business studies)
1989-1992	9 GCSE's at Rugby School, Warwickshire, UK.



Olav Bruin
Creative Director
Nomadic Resorts

Being an accredited Architect, Olav has over 15 years of experience in designing and masterplanning resorts, private residences, housing projects and schools, covering several continents in countries like the Netherlands, Sri Lanka, Thailand, USA, Mexico and the Caribbean.

He is specialized in tropical architecture, bamboo construction and utilizing local crafts with local sustainable materials that fits symbiotically into their natural surroundings.

Professional Experience

2012 - present	Founding Partner and Creative Director of Nomadic Resorts
2010 - present	Bamboo furniture series in collaboration with Bo Reudler Studio
2006 - 2014	Project Architect at 24H-architecture, Rotterdam The Netherlands

Teaching

2013	Workshop Shortsighted Architecture, TU Delft, Netherlands
2013	Bamboo workshop Academie van Bouwkunst Groningen, NL
2011	Bamboo workshop Chiang Mai, Thailand
2008	Bamboo workshop Rangaroon University, Bangkok Thailand

Selection of works at Nomadic Resorts

2018-present	Le Morne eco village & treetop resort (design, ongoing)
2018-present	The Cove tented resort India (under construction)
2017	Wilpattu resort (design)
2014-2017	Yala Wild Coast Resort (completed)
2015	Ambokka Estate (design)

Selection of works as Project Architect at 24H-architecture

2012-2013	Kollektive Galle resort, Galle, Sri Lanka (design)
2009-2013	Houttuyn River Resort Domburg, Surinam (built)
2011-2012	Eco Resort Cite des deux Mers, Nador, Morocco (design)
2011-2012	Villa Corse, Sperone, Corsica, France (design)
2010-2011	Panyaden School Chiang Mai, Thailand (built)
2009-2010	Salt Cay resort for Six Senses, Turks & Caicos islands, Caribbean (design)
2007-2009	Eco resort Soneva Kiri special projects, Koh Kood, Thailand (built)
2002-2004	Dragspelhuset, holiday house, Sweden (built)

Education & Credentials

2000-2006	Technical University Delft Faculty of Architecture, the Netherlands
	Graduated Cum Laude on the National Museum of Dar es Salaam, Tanzania



Curriculum Vitae



Neil Hendrikz
CEO

Lighthouse Sustainability

Lighthouse Sustainability, a Nomadic Resorts' sister company, is responsible for the engineering, fabrication, project management and installation of tented products.

In the year 2000, Neil entered the then innovative and evolving application of fabric membrane structures in remote wilderness hospitality developments in Africa. As Managing Director and owner, he later led a newly established, award-winning design & development company, employing "new generation" lightweight tensile membrane technology, before joining the Nomadic Resorts group. Neil has extensive experience in company systems, sales, project management, manufacturing, logistics and installation of tensile structures in Africa supported by strong financial literacy.

Award Winning Membrane Structure Camps

2016	Somalisa Acacia Camp, Zimbabwe,	Design Africa: Innovation Award
2016	Somalisa Acacia Camp, Zimbabwe,	Award Winning Membrane Structure Camps
2015	Hoanib Skeleton Coast Camp, Namibia,	Design Africa: Innovation Award
		Conde Nast: Best New Remote Hotels
2015	Duma Tau Camp, Botswana,	Tatler Travel Awards: Out of this World
		Conde Nast : Best New Hotels

Fabric Structures

2021 - Present	CEO Lighthouse Sustainability	
2016-2021	COO, Nomadic Resorts	
2010 - 2016	Managing Director, Tenthouse Structures	Remote Camp Developments
2000 - 2013	Managing Director, Cape Shade	Fabric Structures

Corporate Career

1998 - 2000	Managing Director, Seravac	Diagnostic Enzymes
1994 - 1998	Managing Director, Chempro	Specialty Chemicals
1989 - 1994	Marketing Director, Protea Chemicals	Industrial Chemicals
1984 - 1989	Technical Manager, Boland Base Minerals	Mining
1981 - 1984	Process Manager, CG Smith Sugar	Cane Sugar Processing
1980 - 1981	Researcher, SASA Experiment Station	Research

Education & Credentials

1993	Executive Management Program, Graduate School of Business, University of Cape Town
1979	Bachelor of Science (Earth Sciences), University of Natal

Neil is based in the picturesque village of Hout Bay, Cape Town, South Africa



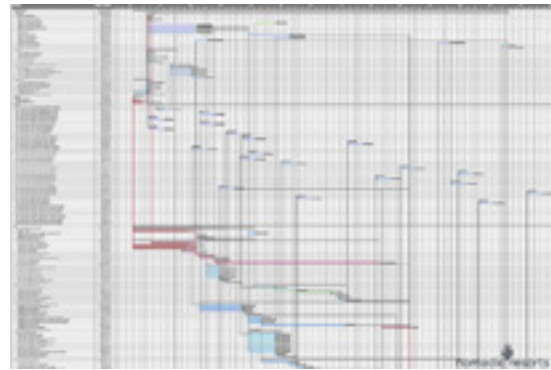


Our services



Definition of Project Needs

Environmental aims, experiential tourism concepts, concept brief, design brief, wellness concept, competitor analysis, manning guide.



Financial Modelling & Project Planning

Financial Modelling assessing project financial viability, capital investment, profitability & return on investment. Collaborative project planning software ensures all participating parties are well informed.



Masterplanning

Comprehensive masterplanning ensuring the best views, protection from adverse weather conditions and coherent functionality as an operational resort.



Architectural Design

Full architectural design services incorporating Concept Design, Schematic Design, Design Development and Technical Design.



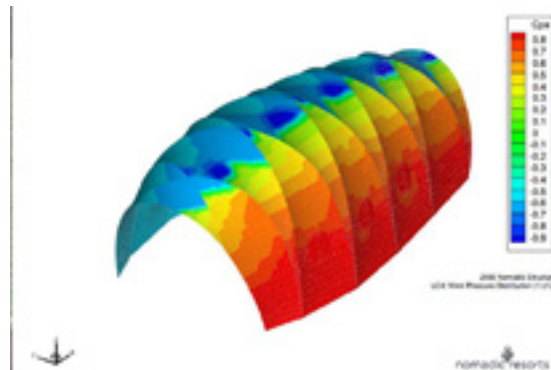
Interior Design

Comprehensive interior design consultancy from concept development and mood boards through to construction drawings and furniture design, alternatively cooperation with interior designers recommended by the client.



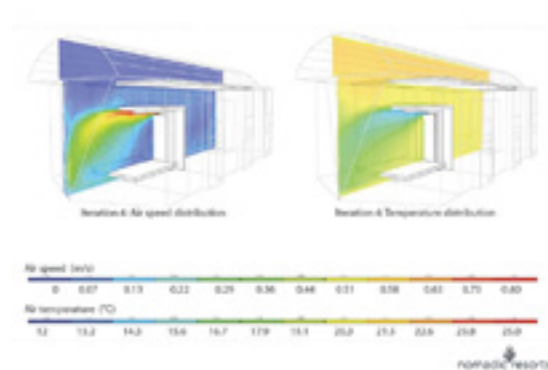
Landscape Design

Specialists in coherent hardscape and softscape concepts, using local plants that provide and promote habitat to the local fauna. Permaculture based edible landscaping concepts to produce organic food on site.



Structural & Membrane Engineering

Structural membrane engineering considering the local environmental conditions of wind, precipitation and terrain. Deliverables are general assembly drawings, membrane form finding & patterning, mechanical draughting and fabrication drawings.



Environmental Design & MEP Engineering

Low carbon & renewable energy strategies. Mechanical Electrical & Plumbing design, performance, cost estimation & construction planning.



Tensile structure Fabrication & Installation

Managing the fabrication of tensile membrane structures to specification. Supervised installation by specialist technicians working with local Main Contractors, Project Managers and labour.



Bamboo Engineering, Supply & Construction

A service network of design specialists, engineers, suppliers and construction supervisors.

Playa Viva Mexico

Playa Viva is an environmentally conscious, zero carbon, off-grid resort dedicated to sustainability and the local community, founded by David Leventhal, the pioneer of the regenerative travel movement.

The latest extension included 6 bamboo treehouses inspired by the flattened, prismatic bodies of the Mobula Rays that migrate past the properties shore. Each treehouse is composed from a master bedroom at the front and an annex treehouse at the rear that contains the bathroom downstairs and a second bedroom/lounge upstairs.

The treehouses are developed using bioclimatic design principles to suit the natural environment: the large eaves of the roof act like a big umbrella, providing shade for the strong heat of the sun and protection from heavy rains. The façade louvers allow for natural cross ventilation.



Mountain Camp Nepal

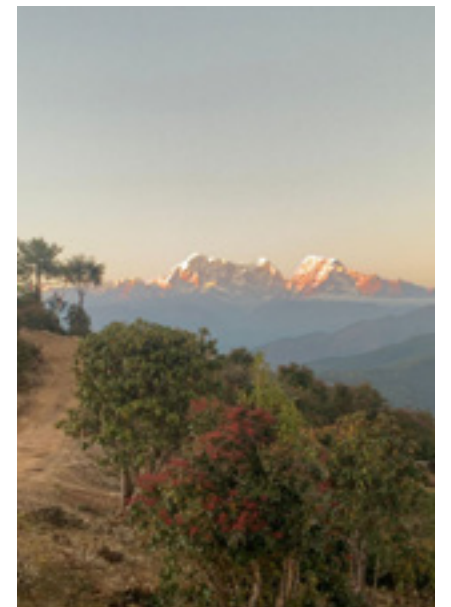
The mountain camp is located on a ridge overlooking the spectacular Himalayan mountains including the Mount Numbur and Mount Everest.

The camp was developed as an adventure sport and wellness destination to allow guests to explore the roof of the world.

This impressive skyline is reflected in the restaurant's pitched roof design, and each interior viewshed is angled towards the peaks in the distance.

The guests are accommodated in thermally insulated, geodesic domes equipped with a stove inside and hot tub on the balcony.

The wellness center appears as a composition of mysterious solid rings that can stand the harsh mountain weather conditions. The spa inside is a sanctuary to offer protection for the guests to practice wellness activities whatever the weather. The skylight-lit interior spaces invite to relax and contemplate.



Samana Dominican Republic

Samana will be a resilient, sustainable community nestled on a hillside, overlooking an iconic Caribbean beach, where guests and residents can live in harmony with the surrounding environment and community. The ground breaking mixed use development offers visitors a chance to enjoy a holistic lifestyle, and learn about the rich heritage of the local community.

Shamana goes well beyond the traditional notions of wellness hospitality by creating an immersive, holistic environment set in lush permaculture landscape inspired by the traditional agriculture systems of the Taino people. Guests can enjoy home grown, plant-based menus, as well as traditional local dishes from the area.

The architecture of the of the project is articulated around a heart-based native education center with an amphitheater for Arts, Music and Well-being programs for both adults and children surrounded by an organic vegetable garden.

Each of the buildings in the compound has been carefully integrated into the natural slope of the land so that all the interior spaces offer spectacular sea views, natural light and healthy air flows.

To meet the goals of its ambitious sustainability program the project integrates a regeneration center for sustainable waste management, renewable energy production. up-cycling and community engagement programs.



Turtle Yoga

Playa Viva, Mexico

Since its inception, Playa Viva conservation and regeneration have been core values for the team. Right back in 2010, the eco-lodge founded La Tortuga a sanctuary to protect turtles from predators and poachers and maintain the integrity of their traditional nesting sites. The new yoga hall pays homage to these endangered sea turtles that frequent the coastline and celebrates their longevity and mysterious philopatry.

The lightweight bamboo roof structure hovers in mid-air between a cluster of palms reflecting the weightlessness of a swimming turtle as it glides through the ocean. The structure aims to inspire the yoga practitioners beneath with this sense of weightlessness, whilst the shell-like roof structure protects them from sun and rain. The open, naturally ventilated space offers uninterrupted sunset views and a fresh, cleansing ocean breeze. The ideal place to align your chakras.



Catskills Retreat USA

Over the last few years we have noticed increased demand for sustainable, off-grid residential projects. The Catskills retreat is in a mountainous region a few hours drive from New York that offers the owners family a great opportunity to escape from the chaos of the city.

The cabin design draws on the typical cabin and barn architecture utilizing natural local materials as stone and timber, but provides a modern twist to create a luxurious but humble residence with dramatic views out over the mountains.

The airtight home is designed to Passivhaus standards to offer low energy thermal comfort throughout the year.



Rose Island Bahamas

The Rose Island Beach Club is one of the most dramatic tropical beach sites we have ever worked on to date – the 107-acre private island, is only 15 minutes from Nassau, the capital of the Bahamas but feels like another world.

The incredible white sand beach on one side and the rugged limestone cliffs on the other taper into a fine spit that protrudes out into the Caribbean for kilometers.

The aim of the project was to develop a sustainable beach club that could cater to the needs of high-net-worth private members but also provide local day trippers with great food and beverage.

The design of the club was inspired by the Rose itself – a series of cantilevered petals that cantilever out from the core structure.

A series of cabanas based on the geometry of a blossoming rose flower are tucked into the native vegetation along the beach.

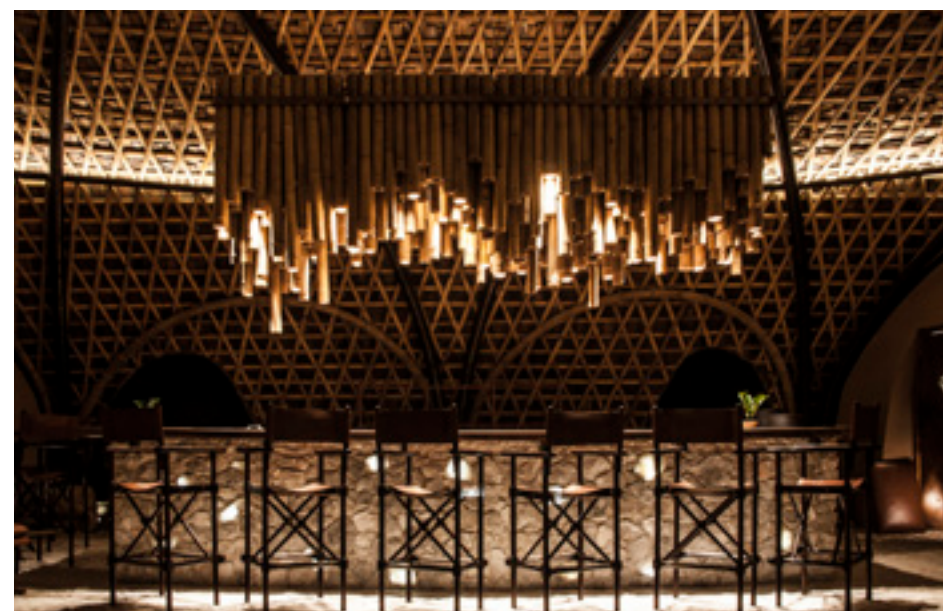


Wild Coast Tented Lodge Sri Lanka

Wild Coast Tented Lodge is a 36-tent safari camp located adjacent to Yala National Park, on the southern tip of Sri Lanka. The eco-resort's organic architecture integrates seamlessly into the site, which comprises dense dryland forest that merges into rugged sandy coastline overlooking the Indian Ocean. Showcasing the beauty of the natural surroundings with minimal intrusion on the landscape, the five-star lodge is designed to give visitors an intimate experience of Yala, and is the first of its kind in Sri Lanka.



Wild Coast Tented Lodge Sri Lanka



The Looper

The Looper is a luxury pod inspired by the form of a caterpillar. The orthogonal structure uses a small volume of structural material to enclose a large internal volume in translucent fabric.

The recyclable membrane flysheet lasts for decades, withstands the harshest environmental conditions, emits no volatile organic compounds and glows like a firefly at night. The unit includes a fully functioning en-suite bathroom with optional solar hot water, a generously proportioned changing room, an air-conditioned sleeping area, a desk area and an outdoor living deck (with an optional retractable cover). The pod is perfectly proportioned for a luxurious break...the internal dimensions are 10m long, 4-5m wide with a 3 m ceiling height and generous space for circulation. In addition the pod provides excellent privacy, acoustic insulation and it is protected against unwanted guests (such as mosquitoes).



The Urchin

The biophilic design was inspired by the globular 'test' or shell of the Sea Urchin - a member of the phylum Echinodermata.

As the Urchin matures it develops a five-fold symmetry (called pentamerism) that is reflected in the ten beamed structure of the tent. Portholes and doors are incorporated into the segments like the tubercles on the shells of the animal to provide access and light.

The Spicules (or beams) are covered by a tensile membrane fabric that is tensioned with a cable at each foot. Insulation can be incorporated between the segments to create a thermally efficient envelope.

The first series of 8 Urchins have been constructed as children's bedroom at Yala Wild Coast Tented Lodge in Sri Lanka.



The Seed Pod Mauritius

The Seed Pod can be hung from trees, rocks, beams or tripods and can typically be installed in a day.

In many ways the Seed Pod encapsulates Nomadic Resorts' ethos: the organically shaped pod discretely integrates the surrounding landscape so naturally, that it resembles a human nest, floating above the forest floor. When designing the pod, we aspired to make a new kind of hotel room, an affordable alternative space that had the lowest possible physical impact on the site and the quickest possible installation time – whether you use it as an experiential treehouse for adventure loving guests sleeping out by the river after a long hike, or a picnic pod for a mosquito free, outdoor dinner on the beach; the pod offers guests a unique experience – the freedom to float.



Mountain Resort USA

The resort is located on the flank of a mountain, offering a panoramic view across the National Park, from sunrise at the east till sunset at the west.

The architecture is inspired by the *parkitecture* tradition, providing an atmosphere that is both cozy and spacious, made from earthy materials such as rammed earth, natural stone, timber and iron details.

The radial floor plans offer a different view from each of the interior spaces



Spirit

Zion National Park, USA

Spirit is the newest luxury wilderness retreat to open in the Zion area. Its mission: to allow guests that stay in one of its 40 suites or homesteads to develop a relationship with the land through the guiding principles of preservation and sustainability.

Inside, both Leaf Suites and Homestead Retreats provide separate living and sleeping areas, including a “wellness studio” that can be used for exercise, meditation, or in-room spa treatments. Despite such luxe amenities, the focus is always on nature. Through panoramic windows and wraparound terraces, guests will have views of some of Zion’s top attractions: Checkerboard Mesa, the East Temple, the West Temple, and Burger Peak among them. Each accommodation also comes with electric bikes for exploring the property’s 35 miles of trails.

While privacy is paramount at Spirit, there is a central lodge with shared amenities to develop a sense of community among guests. Guests will also find a restaurant, library, observatory, lounge, natural swimming pool, and even an aquaponic greenhouse on property.



Sunset Bar Maldives

The overwater Sunset Bar that doubles as wedding chapel and early morning yoga pavilion, will be the iconic centre piece in a redevelopment of a boutique resort in the Maldives.

The design is inspired by the sting ray, one of the most iconic fish of the surrounding sea.

The structure will be built entirely out of bamboo, one of the world's most sustainable building materials.



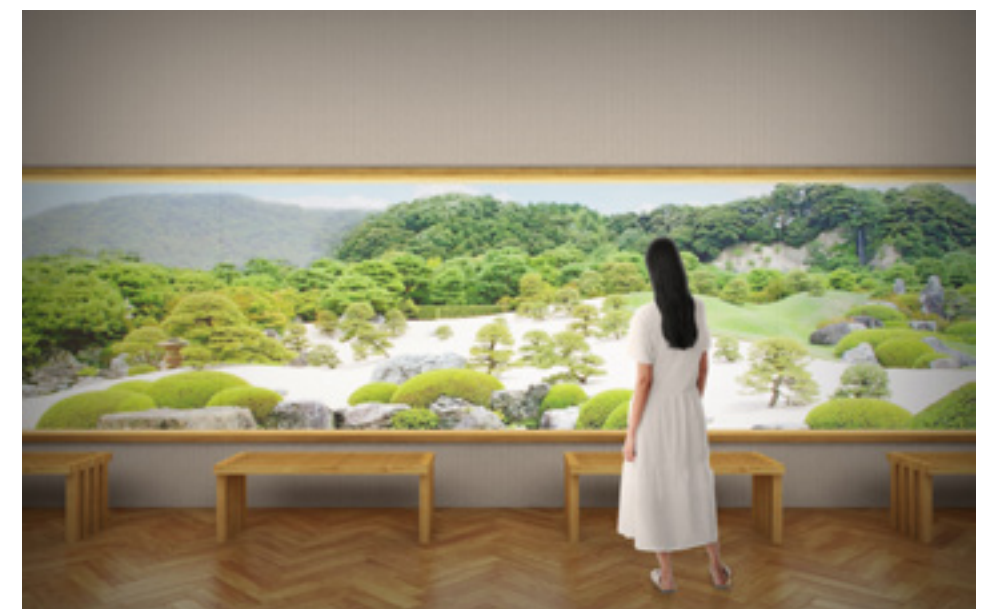
Onsen retreat Taiwan

The retreat includes a series of pavilions that are both iconic and yet in harmony and balance with the surrounding Japanese gardens.

The program includes an Onsen retreat, Japanese Garden visitors centre, reception and a boutique hotel.

The architectural concept is inspired by the minimalist gesture of ORIGAMI, the Japanese art of paper folding, where the rooflines of the buildings are gently folded to echo the profiles of the mountains in the background.

These undulating roofscapes cover functional floorplans that include a well-balanced composition and proportion of spaces as found in traditional Japanese architecture.



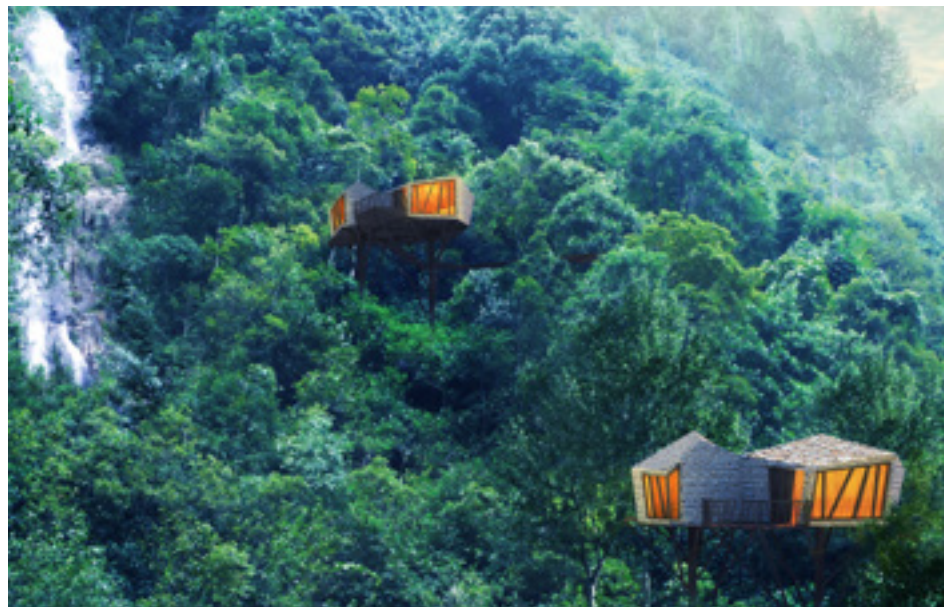
Waterfall retreat South Asia

The dramatic waterscapes and tea plantations are the key visual references of the retreats surroundings.

With their green roofs the buildings are truly embedded into the terraced landscape, minimizing their visual impact and maintaining the landscape history of the site, ensuring the continuation of the tea plantation. Another advantage is the cooling effect by the thick layer of soil and the evaporation of the plants.

The design celebrates these attractions by being fully embedded into the terraced landscape providing uninterrupted views over the lake, without compromising the privacy of the neighbouring buildings.

The retreat is complemented with a spa at the waterfall, treehouse suites, floating suites and a floating bar.



Soneva Kiri Thailand

work at 24H-architecture

Soneva Kiri was a complex mixed use development involving a large number of designers and specialist contractors on a remote island in the East of Thailand.

Our Creative Director Olav Bruin was working for 24H-architecture and was responsible for the architectural design and construction management of the Kids Den , Treetop Dining pod and Cooking Cave. Our CEO Louis Thompson was responsible for landscape design for the project as well as being the project manager responsible for 'special projects' such as the Eco Villa and Treetop Dining pod. Olav and Louis worked closely together on the treetop dining project and Cooking cave. The idea for Nomadic Resorts was born shortly after the completion of the project.



Soneva Kiri Thailand

work at 24H-architecture

Most prominent is The Children Activity and Learning Centre, which will provide visiting children a wide range of entertaining activities as well as raise the level of ecological awareness with them.

The structure and roof are made from local Thai bamboo, thus contributing further to the ecological approach of the resort. The interior is made from local plantation River Red Gum wood and rattan structural elements for the inner domes.

The design adopts all bioclimatic aspects to suits its humid tropical environment. The open design with the translucent elevated rooftop and setback floors allow a natural airflow inside and the use of natural daylight, limiting the building's energy consumption.



Soneva Kiri
Thailand
work at 24H-architecture



Panyaden School Thailand

work at 24H-architecture

Panyaden School aims to deliver a holistic education that integrates Buddhist principles and green awareness with the highly regarded, International Primary Curriculum. Located south of the city of Chiang Mai, this 5,000 m² primary school consists of an informal arrangement of pavilions (salas), organized along pathways inspired by the shape of the tropical antler horn fern.

The entire school has been built from local earth and local bamboo that has been naturally treated to withstand the elements. Organic vegetables and rice will be grown on school property. Environmentally friendly waste water treatment and food waste recycling producing organic fertilizers and biogas for cooking, round up the picture of an environmentally friendly school with a negligible carbon footprint.

The Panyaden School has been designed by 24H-architecture in 2010 where our Creative Director Olav Bruin contributed to the design in his role as Project Architect.



Una Sri Lanka

Una is a boutique eco-resort is surrounded by idyllic rice paddies and tea plantations in the south of Sri Lanka. The resort will become a destination one can feel good about and aims to deliver an ecologically and socially-minded experience for the conscious traveller.

The resort will become an inclusive platform to showcase the best of local culture and putting the community front stage. Working from within this locality it aims to provide access to all the benefits of sustainable tourism, as well as access to the international practitioners leading the charge in green thinking for the future.

Principles of sustainability guide every decision made; from the environmental, cultural and socio-economic impact to management practices. Conscious, circular systems, diversity and inclusion, homegrown and organic, go-local – are some of the formulas the resort will be investing in.

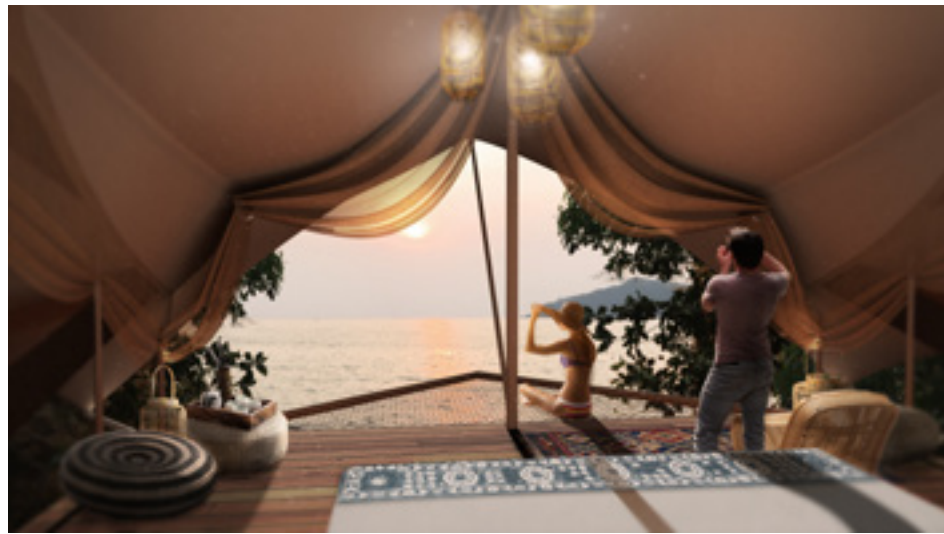
The design of the buildings is reminiscent of giant plant cells, making the microcosmos accessible to humans and immersing them in the lush tropical environment of Sri Lanka from the comfort of biophilic spaces inspired by the biology of nature itself.



The Cove India

The Cove development project is envisaged to deliver a high end ecologically sustainable eco retreat experience. The ambition is to use low impact natural materials in a sustainable design, utilizing local craftsmanship, renewable energy implementation, world class eco tourism operational procedures and the operational talent to bring out the setting for soul nourishing experiential vacations. There are two defined spheres which need to be distinct and separate in design and layout – personal space and common space – and yet, seamless in integration.

The single obvious challenge is to find the right balance between man-made intervention and the natural environment to provide a choice of activities that deliver the promise of soul nourishing experiences.



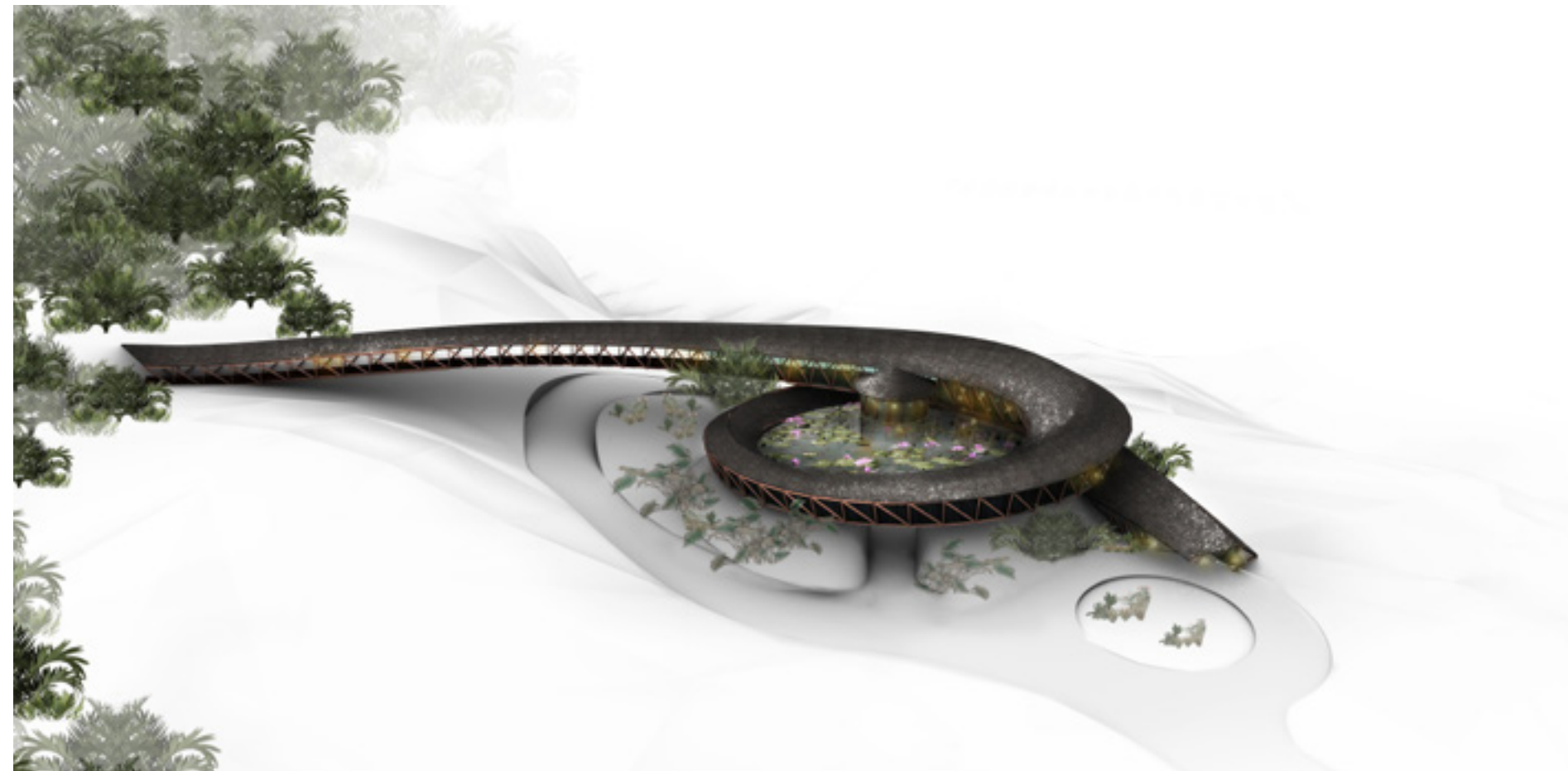
Onsen wellness retreat Taiwan

The concept for this project investigates the various forms that water can take like a stream, a vortex or as concentric ripples produced on water's surface when an object is dropped into it, Each of these rings offers different opportunities for private groups and individuals. The serene teahouse is located in the centre of a placid lake offering guests an opportunity for meditation and contemplation.

The simplicity and elegance of traditional Japanese Ryokans featuring tatami flooring and sliding shoji screens have always appealed to our aesthetic; while the creation of rock pools and ponds is a fascinating challenge.

Many of these inns have been operational for over a thousand years – the oldest existing hotels in the world – one must therefore assume, that their appeal is timeless.

The values of the project allow us to focus on simplicity, mindfulness and healing, offering us an opportunity to explore biophilic design and man's relationship with nature.



Tri Sri Lanka

Tri Lanka is a 10 room sustainable design hotel located on Koggala lake near Galle in Southern Sri Lanka. The project design is based on the Fibonacci series and is characterized by the sentient Ficus tree at the crown of the site. The project has panoramic views of the surrounding lake, and the green roofed villas nestled into the hillside follow a spiral form up past the yoga pavilion and library to the cinnamon clad water tower at the top of the hill. Nomadic resorts assisted the client with the green roof design, and the landscape design and realization. The project has recently opened in August 2015.



Dome of Plants

Cape Town, South Africa

In collaboration with LOLA landscape architects, Nomadic Resorts designed the Dome of Plants in Cape Town, South Africa. The dome is a temporary structure meant to become a hotspot in a now largely stagnant and grey part of town. Centrally positioned on Luthuli Plaza in Cape Town, the all bamboo dome structure of 20m width and 15m height will offer an inviting garden-like space for urban encounters such as events, workshops, exhibitions, meetings, lunch and a quick coffee outside the big institutions, accessible for everyone.

The dome will be constructed of mainly biological materials (bamboo, wood and plants) and fed by purified waste water, with a minimal ecological footprint. The position in the city, its bold and lush appearance and the innovative construction and application of technology will make sure it will become a sustainable icon for the city.

